




Your Agency



18B John Street Tighes Hill NSW

3  2  2 

This enviable address places you at the heart of everything that Tighes Hill is famous for! Only weeks from completion are two executive residences that will put you at the centre of it all; cafes, cycleways, parks, schools, inner city living at its best.

- Ceaserstone kitchens with island bench & walk in pantry
- Ensuite & WIR in the master bedroom
- Outdoor covered entertaining area
- TORRENS TITLE - NO STRATA FEES!

Land Size : 209.5 sqm

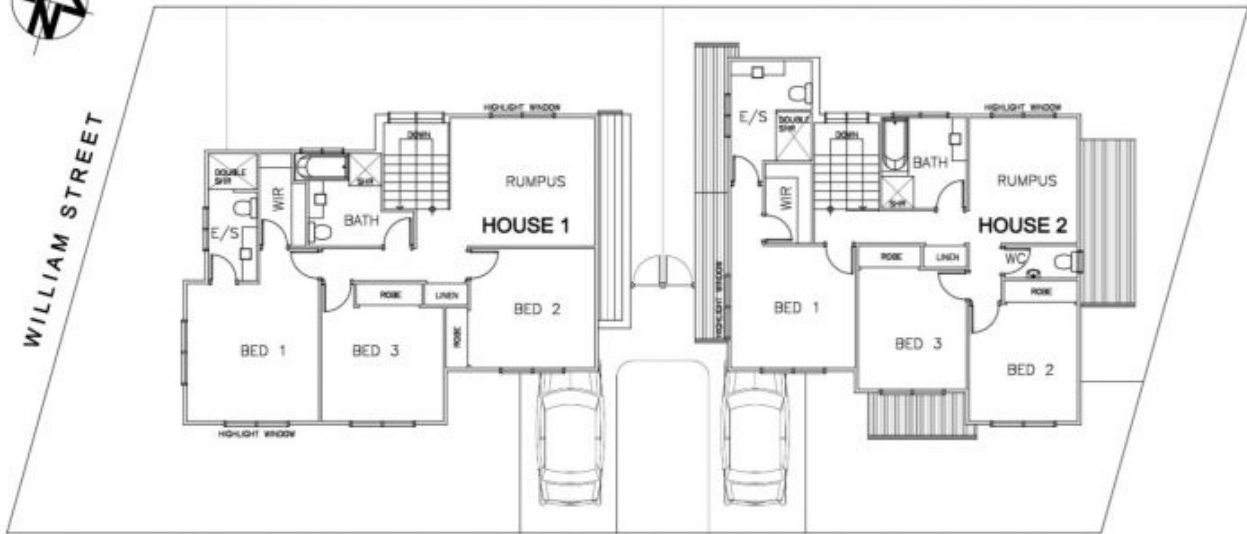
View : <https://www.youragency.net.au/sale/nsw/newcastle-region/tighes-hill/residential/house/5913087>



David Caldwell
02 4023 8440



Chris Rousos
02 4023 8440



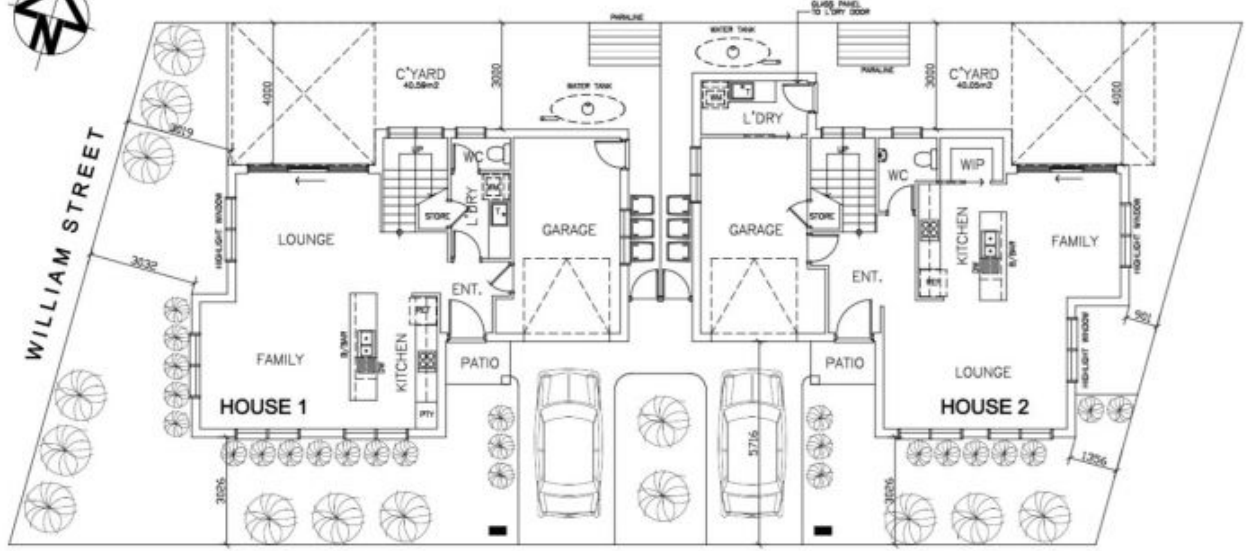
UPPER LEVEL

HOUSE 1:
 LOWER LEVEL: 63.58 M2
 UPPER LEVEL: 86.11 M2
 GARAGE: 19.85 M2
 PATIO: 2.16 M2
 TOTAL: 171.70 M2

HOUSE 2:
 LOWER LEVEL: 69.34 M2
 UPPER LEVEL: 81.56 M2
 GARAGE: 19.53 M2
 PATIO: 2.16 M2
 TOTAL: 172.59 M2



Drawn	Date	Scale	A3	Checked	Date
NLC	26.03.2015	1:100		CBT	27.03.2015
Designed	Project No.	Dwg. No.		Issue	
CBT	TD_15/026	CS_02		A	
COPYRIGHT © 2015 TONER DESIGN PTY LTD					



LOWER LEVEL

HOUSE 1:
 LOWER LEVEL: 63.58 M2
 UPPER LEVEL: 86.11 M2
 GARAGE: 19.85 M2
 PATIO: 2.16 M2
 TOTAL: 171.70 M2

HOUSE 2:
 LOWER LEVEL: 69.34 M2
 UPPER LEVEL: 81.56 M2
 GARAGE: 19.53 M2
 PATIO: 2.16 M2
 TOTAL: 172.59 M2



Drawn	Date	Scale	A3	Checked	Date
NLC	26.03.2015	1:100		CBT	27.03.2015
Designed	Project No.	Dwg. No.		Issue	
CBT	TD_15/026	CS_01		A	
COPYRIGHT © 2015 TONER DESIGN PTY LTD					