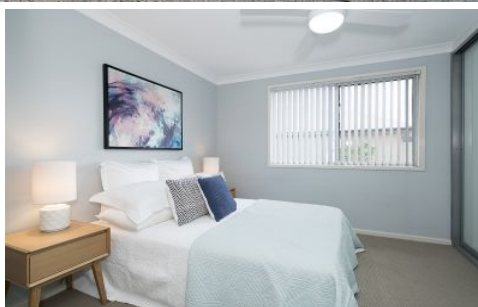


# Your Agency



## 113 Fleming Street Islington NSW

4 1 3

This one is a must see! Deceptive from the front, you won't believe what's behind the front door...4 double bedrooms, all with built-ins, cosy study, big modernised bathroom, large, open plan lounge, kitchen & dining area, high ceilings & all set on a sunny, level 481sqm block.

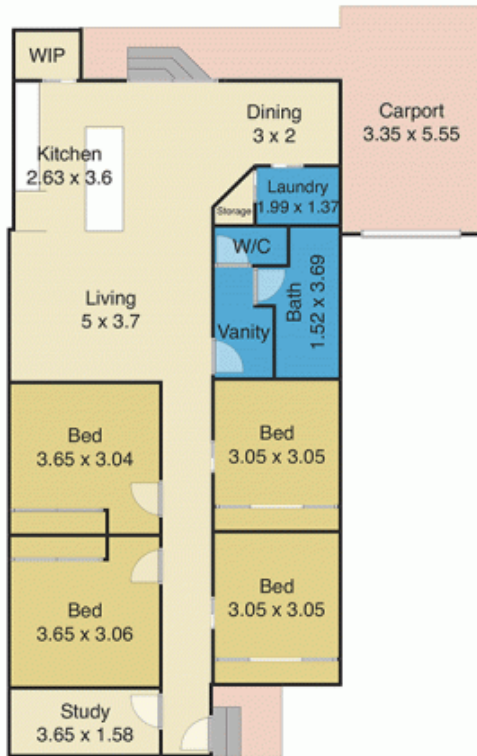
**Land Size** : 481 sqm

**View** : <https://www.youragency.net.au/lease/nsw/newcastle-region/islington/residential/house/5913172>

- . Pets Allowed
- . Close to Schools & Shops
- . Close to Honeysuckle Precinct & Newcastle City
- . Close to Public Transport
- . Air Conditioned



**Chris Rousos**  
02 4023 8440



Site Plan



Measurements are approximate  
and are to be used only as a guide

113 Fleming Street, Islington