

Your Agency



1/103 Howe Street Lambton NSW

2 1 1

Impressively well proportioned and designed for low maintenance living and effortless functionality throughout, this exceptional townhouse defines contemporary designer living without compromise. Ideally suited to the professional couple or first home buyer wanting to enjoy the village culture of Lambton.

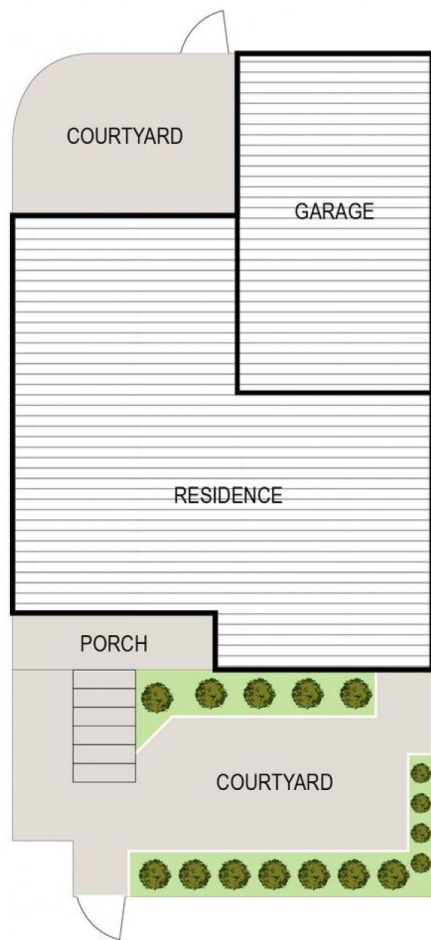
- Sun-filled living courtesy of a superb northern perspective
- Deluxe kitchen with granite benches, stainless appliances
- Mature gardens, sunny north facing courtyard with garden seating
- Stroll to parks, shops, swimming pool & everything Lambton CBD has to offer

Price : \$ 495,000
Building Size : 120 sqm
Land Size : 145 sqm
View : <https://www.youragency.net.au/sale/nsw/newcastle-region/lambton/residential/townhouse/5913205>

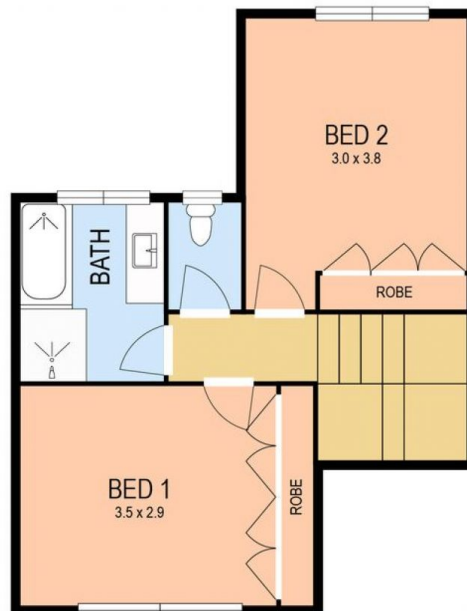


David Caldwell
02 4023 8440

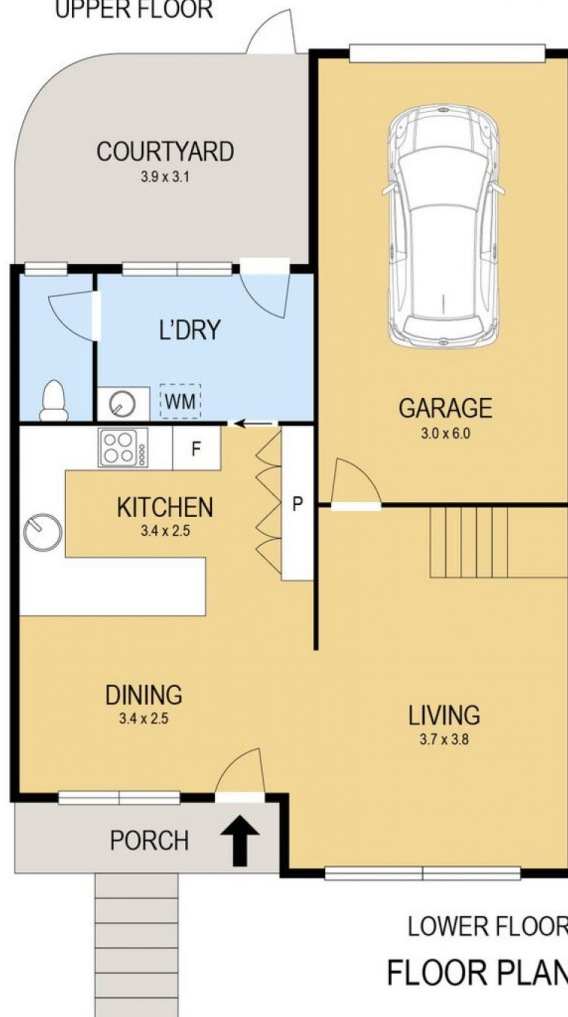
<https://www.youragency.net.au>



SITE PLAN



UPPER FLOOR



LOWER FLOOR
FLOOR PLAN



Scale in metres. Indicative only. Dimensions are approximate. All information contained herein is gathered from sources we believe to be reliable. However we cannot guarantee its accuracy and interested persons should rely on their own enquiries



1/103 Howe Street, Lambton

APPROX. TOTAL FLOOR AREA : 120M²