

Your Agency



53 Niven Parade Rutherford NSW

4 2 2

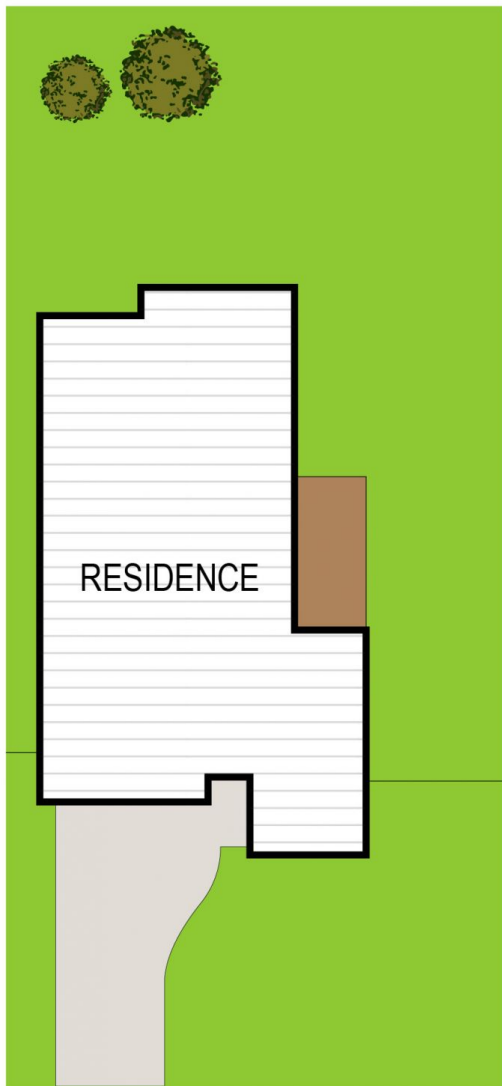
Offering all the ease of a flowing single level layout, this near new residence features a choice of living areas, generous bedroom accommodation, central kitchen to all indoor/outdoor family areas. Complemented by a fully fenced rear yard perfect for children and pets.

- Quiet street frontage, double garage with internal access
- Ideal for first home buyers and astute investors alike
- Conveniently located only minutes to the Hunter Expressway

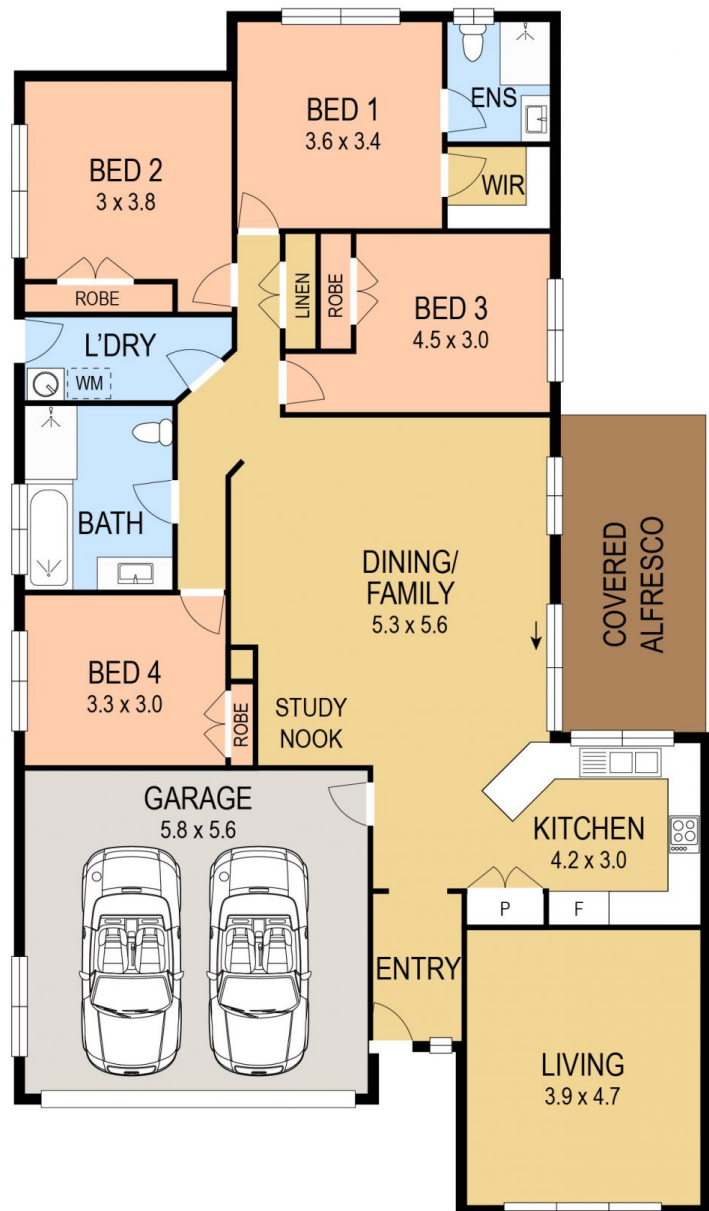
Price : \$ 435,000
Land Size : 690 sqm
View : <https://www.youragency.net.au/sale/nsw/hunter-valley-lower/rutherford/residential/house/5913240>



David Caldwell
02 4023 8440



SITE PLAN



FLOOR PLAN



Scale in metres. Indicative only. Dimensions are approximate. All information contained herein is gathered from sources we believe to be reliable. However we cannot guarantee its accuracy and interested persons should rely on their own enquiries



53 Niven Parade, Rutherford

APPROX. TOTAL FLOOR AREA : 189 M²