

Your Agency



142 Woodford Street Minmi NSW

4 2 4

Commanding stunning street appeal and vast district views, this modern brick home showcases oversized modern interiors and endless entertaining space.

A truly impressive character-filled home in a genuinely unique and rural setting makes for the ultimate in family living.

- Spacious layout contains two oversized lounge areas & large formal dining
- Centralised gourmet kitchen, with endless storage, dishwasher & stone benchtops
- Ducted zoned air conditioning, gas log fireplace & natural gas hot water system
- Seamless flow out to enormous covered entertaining terrace
- Set on 1,242m2 fully fenced low maintenance yard within

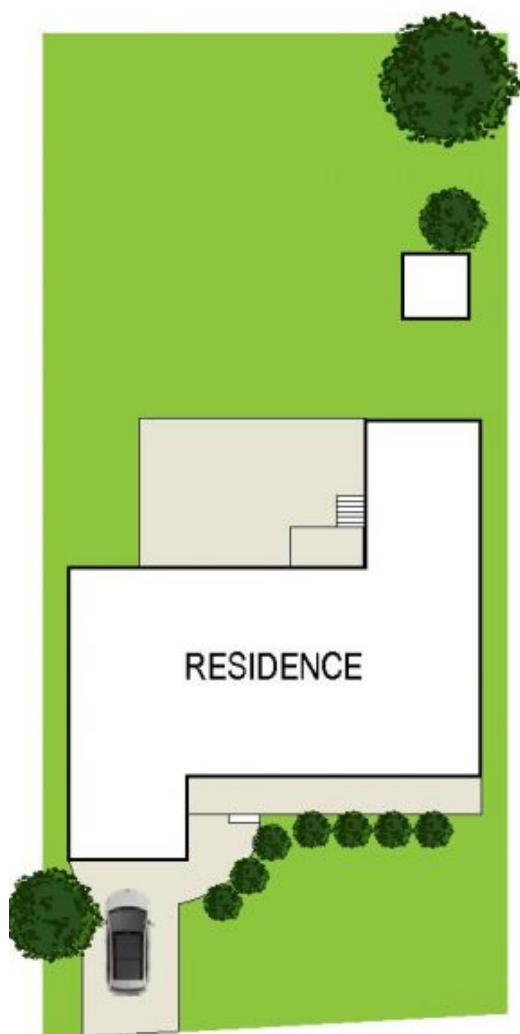
Price : \$ 770,000
Land Size : 1242 sqm
View : <https://www.youragency.net.au/sale/nsw/newcastle-region/minmi/residential/house/5913278>



David Caldwell
02 4023 8440



Chris Rousos
02 4023 8440



SITE PLAN



FLOOR PLAN



Scale in metres. Indicative only. Dimensions are approximate. All information contained herein is gathered from sources we believe to be reliable. However we cannot guarantee its accuracy and interested persons should rely on their own enquiries



142 Woodford Street, Minmi

APPROX. TOTAL FLOOR AREA: 376M²