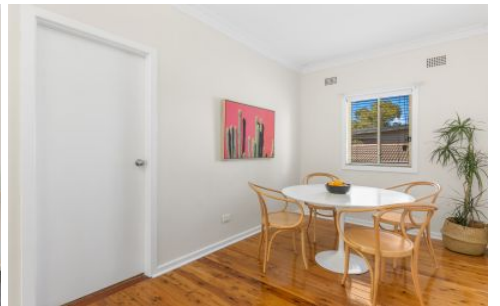


Your Agency



67 Jubilee Road Elmore Vale NSW

3 1 1

This updated residence provides the perfect starting point to enter the real estate market, the extensive rear yard can be simply enjoyed by the family or provide room for a large shed or workshop. Alternatively the block arrangement is ideal for a second dwelling making a dual income investment (STCA).

- Perfect first home with endless opportunities to add further value
- Ideal arrangement for dual occupancy at the rear (STCA)
- Central to Elmore Vale shopping centre and Stockland Glendale

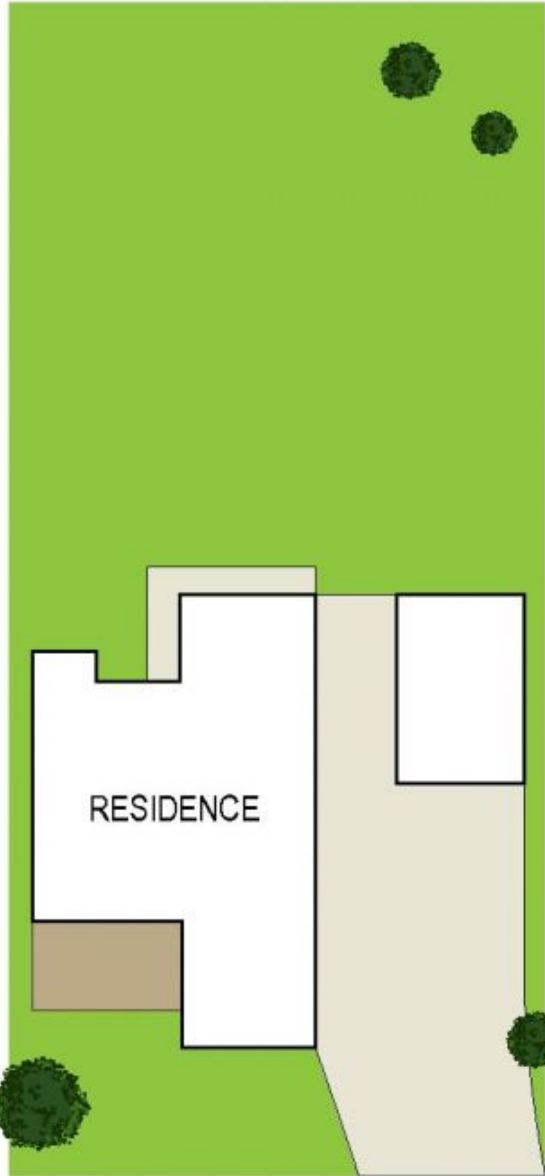
Price : \$ 429,000
Land Size : 734 sqm
View : <https://www.youragency.net.au/sale/nsw/newcastle-region/elmore-vale/residential/house/5913293>



David Caldwell
02 4023 8440



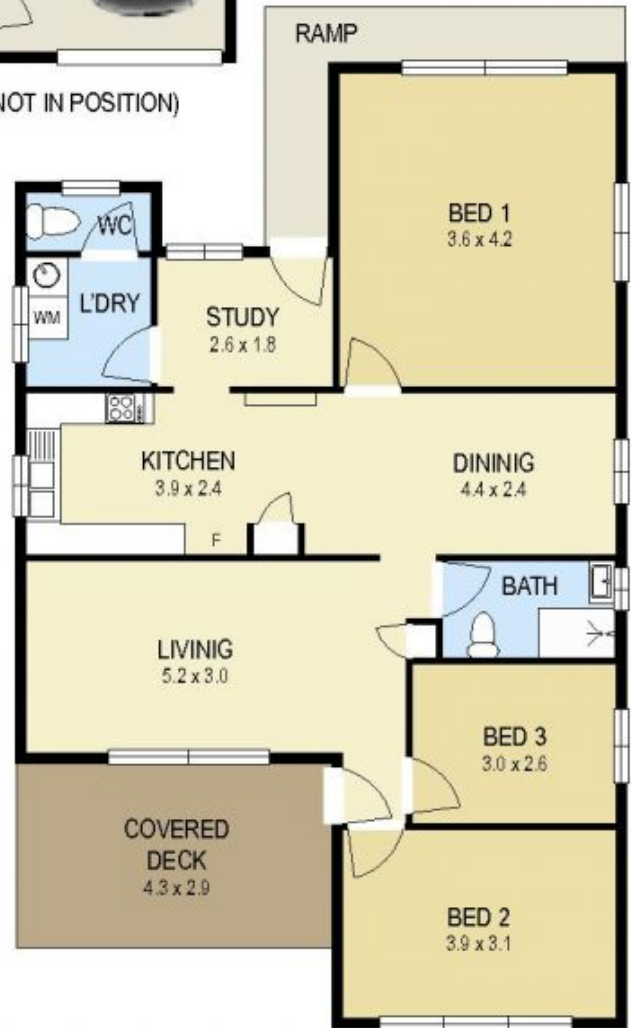
Chris Rousos
02 4023 8440



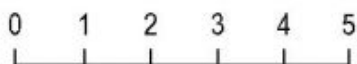
SITE PLAN



(NOT IN POSITION)



FLOOR PLAN



Scale in metres. Indicative only. Dimensions are approximate. All information contained herein is gathered from sources we believe to be reliable. However we cannot guarantee its accuracy and interested persons should rely on their own enquiries

