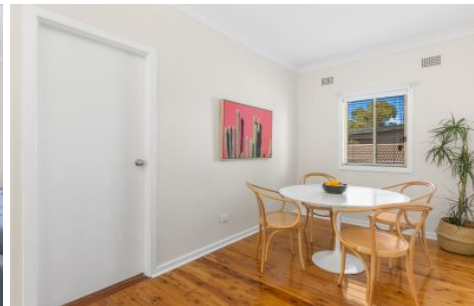


Your Agency



67 Jubilee Road Elmore Vale NSW

3  1  1 

This freshly updated property is located in a central position close to Elmore Vale Shopping Centre, bus route, John Hunter Hospital plus the Newcastle Link Road.

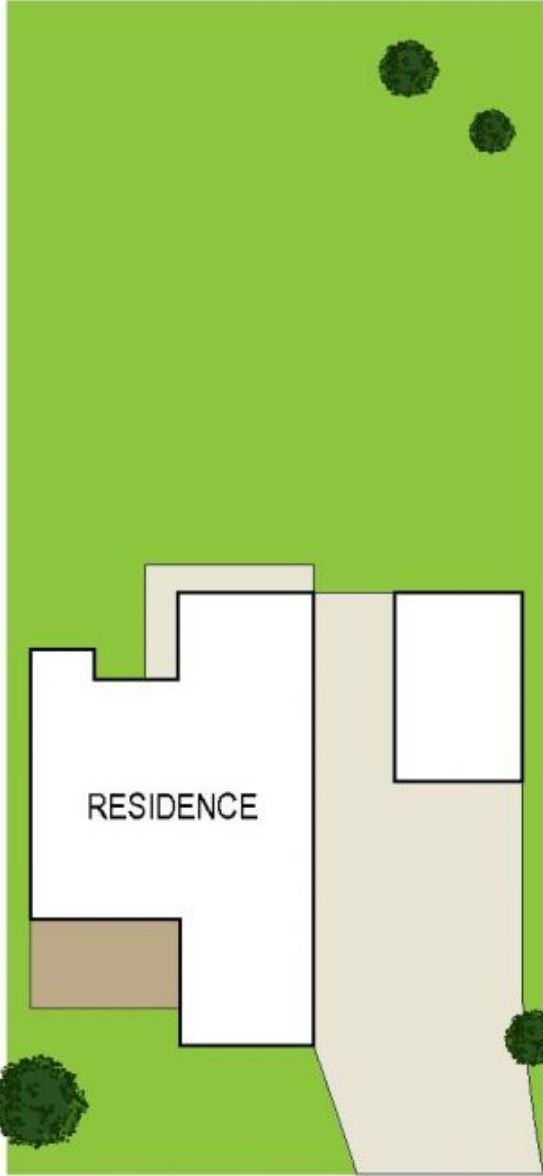
- 3 bedroom home plus study nook
- freshly painted throughout, brand new carpet to bedrooms
- timber floors, air conditioning and ceiling fans
- single lock up garage

Land Size : 734 sqm

View : <https://www.youragency.net.au/lease/nsw/newcastle-region/elmore-vale/residential/home-use/5913309>



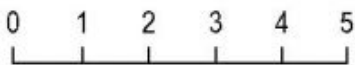
Chris Rousos
02 4023 8440



SITE PLAN



FLOOR PLAN



Scale in metres. Indicative only. Dimensions are approximate. All information contained herein is gathered from sources we believe to be reliable. However we cannot guarantee its accuracy and interested persons should rely on their own enquiries

