

Your Agency



28 Hebburn Street Hamilton East NSW

5 2 2

With its classic federation facade and period elegance this traditional home nestled in the prestige suburb of Hamilton East will appeal to growing families seeking space, comfort and luxury. Designed over two flawless levels, showcasing a spacious open plan island kitchen with separate living zones this property delivers an environment of privacy, quality & versatility complimented by a pool side entertaining area.

- Flowing layout features formal lounge & dining room showcasing rich timber detailing
- Substantial island kitchen fitted with high end appliances & endless storage
- Palatial master suite with large second bathroom, walk-in robe & home office
- Open plan family lounge effortlessly connects outdoors to

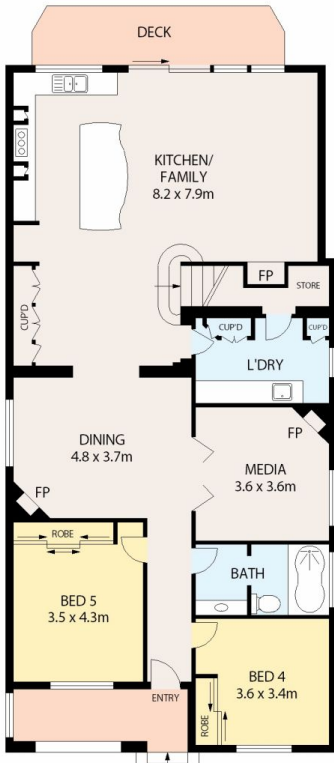
Building Size : 257 sqm
Land Size : 553 sqm
View : <https://www.youragency.net.au/sale/nsw/newcastle-region/hamilton-east/residential/house/5913367>



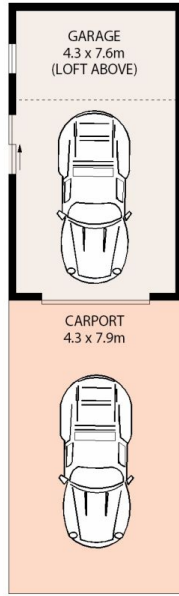
Chris Rousos
02 4023 8440



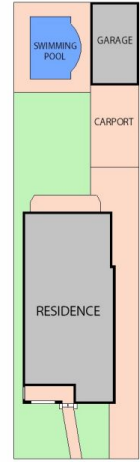
David Caldwell
02 4023 8440



ENTRY LEVEL

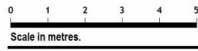


UPPER LEVEL



SITE PLAN (NOT TO SCALE)

Internal Area - 245m²
Land Size - 553m²



Scale in metres.

Floor and site plans are provided for marketing purposes only. Measurements are approximate and not to scale. Interested persons should rely on their own enquiries.



your agency

28 Hebburn Street, Hamilton East

first site imaging