

Your Agency



123 Dangerfield Drive Elmore Vale NSW

4 🏠 3 🚗 2 🚗

Available for lease is this grand 2-storey home which boasts a generous layout with multiple living zones for the whole family to enjoy!

Featuring a formal lounge/ media room, an open plan family/dining with a stunning contemporary kitchen showcasing sleek cabinetry, a walk-in pantry & stainless steel appliances. The luxurious master bedroom is the ultimate parent's retreat complete with large walk-in robe and ultra-modern ensuite. The rear of the home features sliding doors which offer instant flow onto the covered alfresco patio for effortless entertaining.

- Zoned ducted air conditioning throughout & internal access from the garage
- Walking distance to Elmore Vale Shopping centre and

Land Size : 662 sqm
View : <https://www.youragency.net.au/lease/nsw/newcastle-region/elmore-vale/residential/house/6490191>



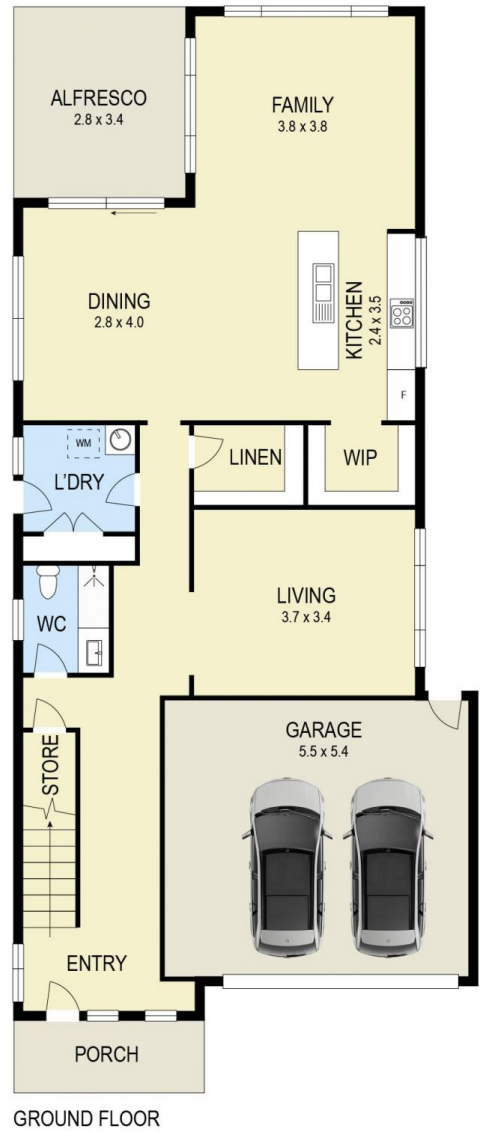
Chris Rousos
02 4023 8440



SITE PLAN



FIRST FLOOR



GROUND FLOOR

FLOOR PLAN



Scale in metres. Indicative only. Dimensions are approximate. All information contained herein is gathered from sources we believe to be reliable. However we cannot guarantee its accuracy and interested persons should rely on their own enquiries



123 Dangerfield Drive, Elmore Vale

APPROX. TOTAL FLOOR AREA : 229.4M²