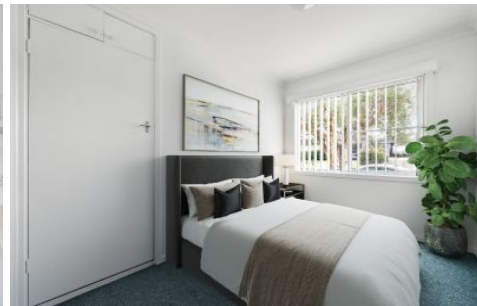


# Your Agency



1/13 Astbury Street New Lambton NSW

2 1 1

Situated in a peaceful setting within a well-maintained building is this beautifully renovated apartment. Conveniently located just moments from the bustling New Lambton precinct with its endless selection of cafes, restaurants and shops, this property also benefits from a close proximity to Lambton swimming pool, transport & local schools.

**View :** <https://www.youragency.net.au/lease/nsw/newcastle-region/new-lambton/residential/unit/7611145>

- Combined lounge and dining space
- Two generously sized bedrooms
- New kitchen with electric cooking and ample storage space
- Internal laundry space
- Air Conditioning
- Water usage included
- Off street allocated parking



**Chris Rousos**  
02 4023 8440