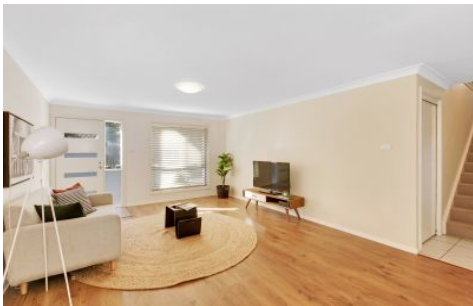


Your Agency



4/274 Park Avenue Kotara NSW

3 2 2

Available for lease is this luxury townhouse quietly set to the rear within a tightly held boutique complex of only four!

Completely freestanding and boasting house-like proportions and superb outdoor flow, it's positioned in an ultra-convenient location of Kotara.

- Three generous bedrooms with built-in robes, master suite with ensuite
- Spacious living with seamless flow to private courtyard
- Large double garage with internal access
- Two reverse cycle A/C units, internal laundry
- Quality caesar stone kitchen
- Upstairs balcony
- Small pets considered upon application
- Walking distance to Westfield shopping centre, parks, &

Land Size : 174 sqm

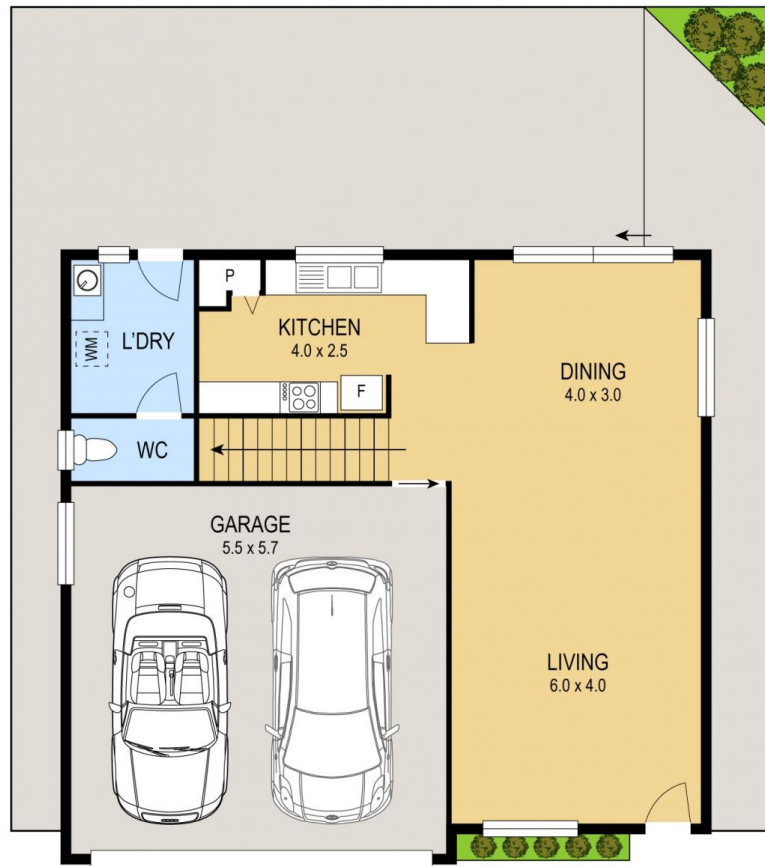
View : <https://www.youragency.net.au/lease/nsw/newcastle-region/kotara/residential/townhouse/7701531>



Chris Rousos
02 4023 8440



UPPER LEVEL



GROUND FLOOR



Scale in metres. Indicative only. Dimensions are approximate. All information contained herein is gathered from sources we believe to be reliable. However we cannot guarantee its accuracy and interested persons should rely on their own enquiries

